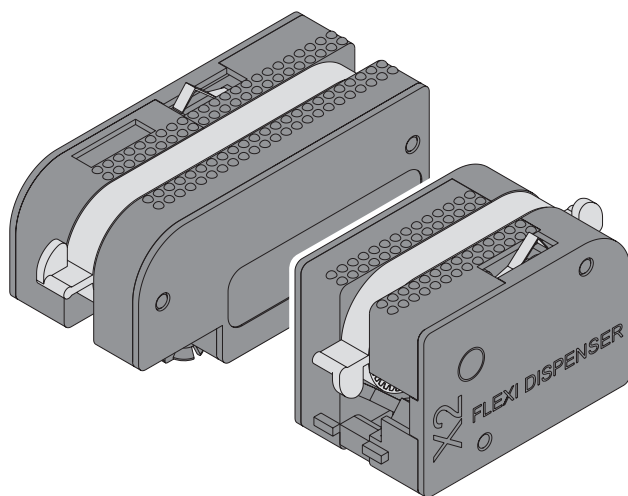


MOTOR DISPENSER

X2 STANDARD SMALL



rev. 2-01-09-14 ENG



SaXXot Deutschland GmbH, Zeppelinstrasse 73, DE 81669 München
Tel.: +49 (0)894141446-00 Fax: +49 (089) 4141446-75, info@saxxot.de - www.saxxot.de

TECHNICAL MANUAL

INDEX

1 GENERAL INFORMATION

- 1.1 GENERALITIES
- 1.2 VERSIONS
- 1.3 DIMENSIONS
- 1.4 TECHNICAL DATA
- 1.5 CONDITIONS FOR USE

2 OPERATION

- 2.1 ON SELF HOLD
- 2.2 DIRECT CONTROL (HIGH SIDE SWITCH)
- 2.3 DIRECT CONTROL (LOW SIDE SWITCH)
- 2.4 MANAGING PRODUCT PRESENCE SWITCH
- 2.5 STOP PRODUCT POSITION
 - 2.5.1 SW3 Switch
 - 2.5.1 SW4 Switch
- 2.6 GAMMA MODELS
- 2.7 CC TALK SUPPORTED COMMANDS
- 2.8 TABLE FOR ORDERS

3 SPARE PARTS

1 GENERAL INFORMATION

1.1 GENERALITIES

The **X2** motor dispenser is available in two new versions, adaptable to various needs as far as available space inside the machines, and can be used in multiple applications in automatic product and prize drawing distributors. Its versatility makes it simple to connect and install on any type of machine.

1.2 VERSIONS

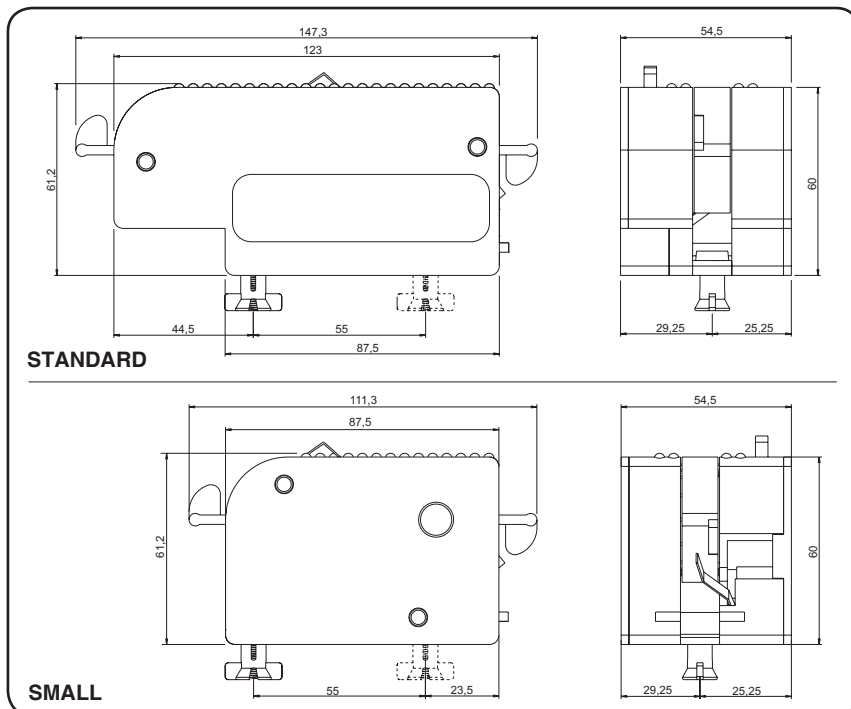
Two versions of the **X2** motor dispenser are available:

STANDARD

SMALL

1.3 DIMENSIONS

Files in 3d format can be requested at Info@saXXot.de for design purposes (for the various exportation extensions).



1.4 TECHNICAL DATA

Dispensing speed (STANDARD mod.)	3.5"
Dispensing speed (SMALL mod.)	2.4"
Power supply	12V dc \pm 10%
Weight (STANDARD mod.)	254 gr
Weight (SMALL mod.)	217 gr

1.5 CONDITIONS FOR USE

For the **X2** motor dispenser to function properly it should be installed inside machines that conform to the following conditions for use

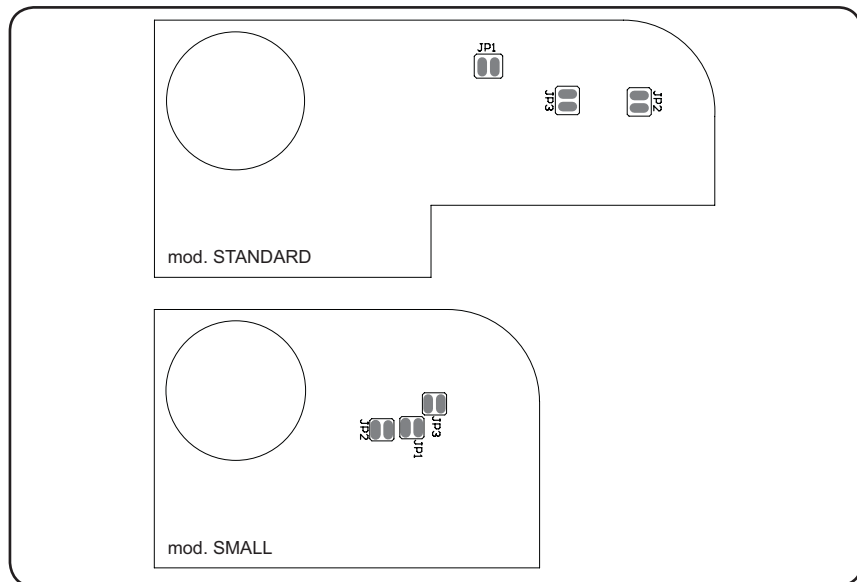
- **NOT EXPOSED TO DIRECT SUNLIGHT**
- **MINIMUM TEMPERATURE 0°C**
- **MAXIMUM TEMPERATURE 50°C**
- **RELATIVE HUMIDITY BETWEEN 50 AND 90%**

2 OPERATION

2.1 ON SELF HOLD

The grounded signal sent to the pin 6 for a minimum of 0.5 seconds starts dispensing the product.

At the end of the operation **X2** autonomously returns to its starting position, ready for the next dispensing.



version A

**JP1
OPEN**

**JP2
CLOSED**

**JP3
CLOSED**

- 1 +12V dc
- 2 NC empty
- 3 NO empty
- 4 GND
- 5 GND
- 6 cycle working (GND)

version B

**JP1
OPEN**

**JP2
OPEN**

**JP3
OPEN**

- 1 +12V dc
- 2 NC empty
- 3 NO empty
- 4 -
- 5 GND
- 6 cycle working (GND)

2.2 DIRECT CONTROL (HIGH SIDE SWITCH)

The signal sent to +12V to pin 1 starts dispensing the product.

Dispensing can be de-activated by excluding the sending of this signal.

When the tape's flap passes the stop switch it transforms it into a position sensor, leading to the shortcircuiting of pin 4.

To electronically manage the signal we suggest using a pull-up.

At the end of the operation **X2** autonomously returns to the starting position, ready for the next dispensing.

version C

	JP1 CLOSED	JP2 OPEN	JP3 CLOSED
1	MOTOR OPERATION +12V dc		
2	NC empty		
3	NO empty		
4	PRODUCT DISPENSING SIGNAL (GND)		
5	GND		
6	-		

2.3 DIRECT CONTROL (LOW SIDE SWITCH)

The ground signal sent to pin 6 starts dispensing the product.

Dispensing can be de-activated by excluding the sending of this signal.

When the tape's flap passes the stop switch it transforms it into a position sensor, leading to the shortcircuiting of pin 4.

To electronically manage the signal we suggest using a pull-up.

At the end of the operation **X2** autonomously returns to the starting position, ready for the next dispensing.

version D

	JP1 OPEN	JP2 OPEN	JP3 OPEN
1	MOTOR OPERATION +12V dc		
2	NC empty		
3	NO empty		
4	PRODUCT DISPENSING SIGNAL (GND)		
5	GND		
6	-		

2.4 MANAGING PRODUCT PRESENCE SIGNAL

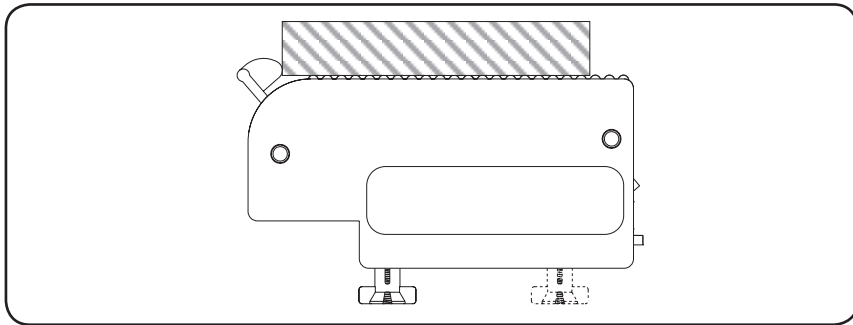
The energized SW1 sensor indicates the presence of product on the **X2** dispenser motion.

2.5 PRODUCT STOP POSITION

It is possible to set a stopping point for the product package on the **X2** by using the two switches, SW3 or SW4.

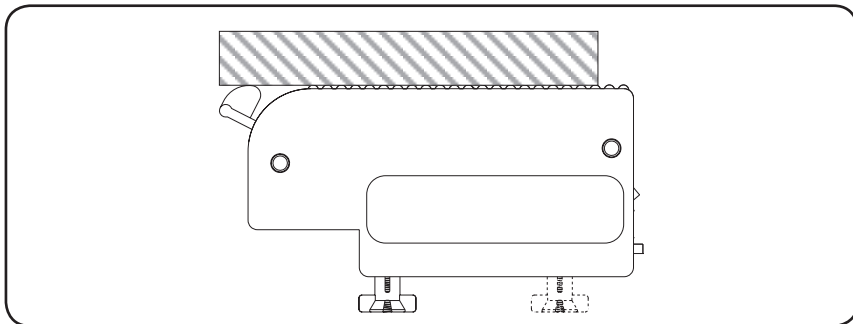
2.5.1 SW3 Switch

Enable the SW3 switch to stop the package at the beginning of the horizontal plane.



2.5.1 SW4 Switch

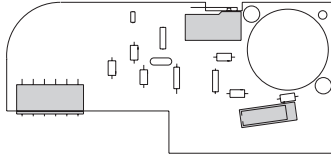
Enable the SW4 switch to stop the package at the end of the horizontal plane.



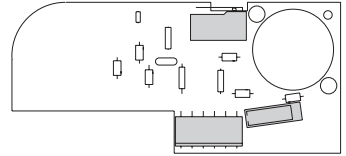
2.6 GAMMA MODELS

The drawings refer to the sheet.

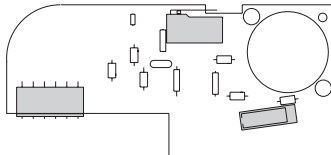
X2 STANDARD SD1X



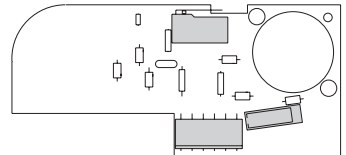
X2 STANDARD SD1Y



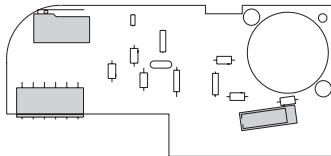
X2 STANDARD SD2X



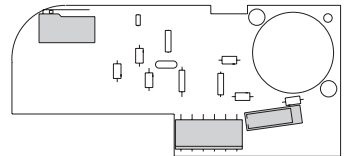
X2 STANDARD SD2Y



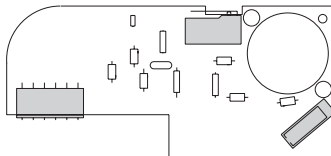
X2 STANDARD SD3X



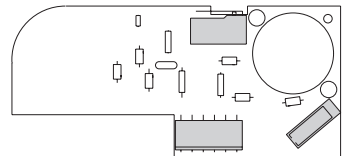
X2 STANDARD SD3Y



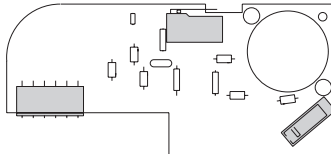
X2 STANDARD SD4X



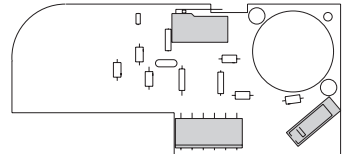
X2 STANDARD SD4Y



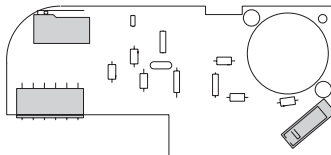
X2 STANDARD SD5X



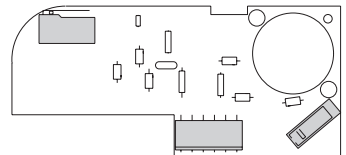
X2 STANDARD SD5Y



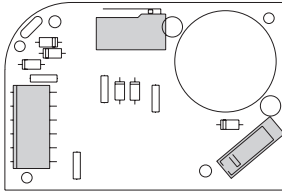
X2 STANDARD SD6X



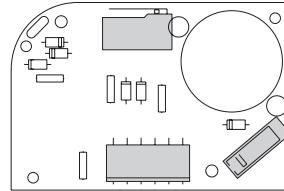
X2 STANDARD SD6Y



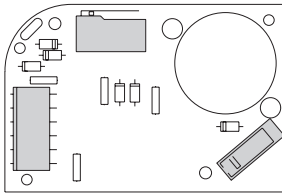
X2 SMALL SM1X



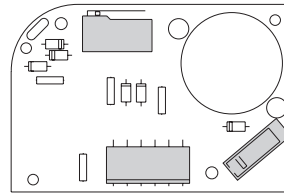
X2 SMALL SM1Y



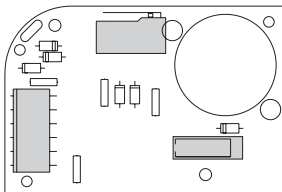
X2 SMALL SM2X



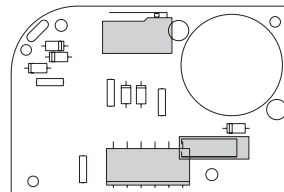
X2 SMALL SM2Y



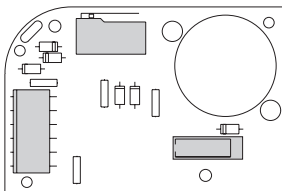
X2 SMALL SM3X



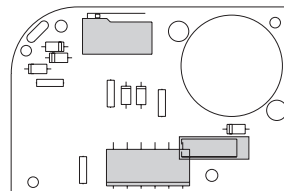
X2 SMALL SM3Y



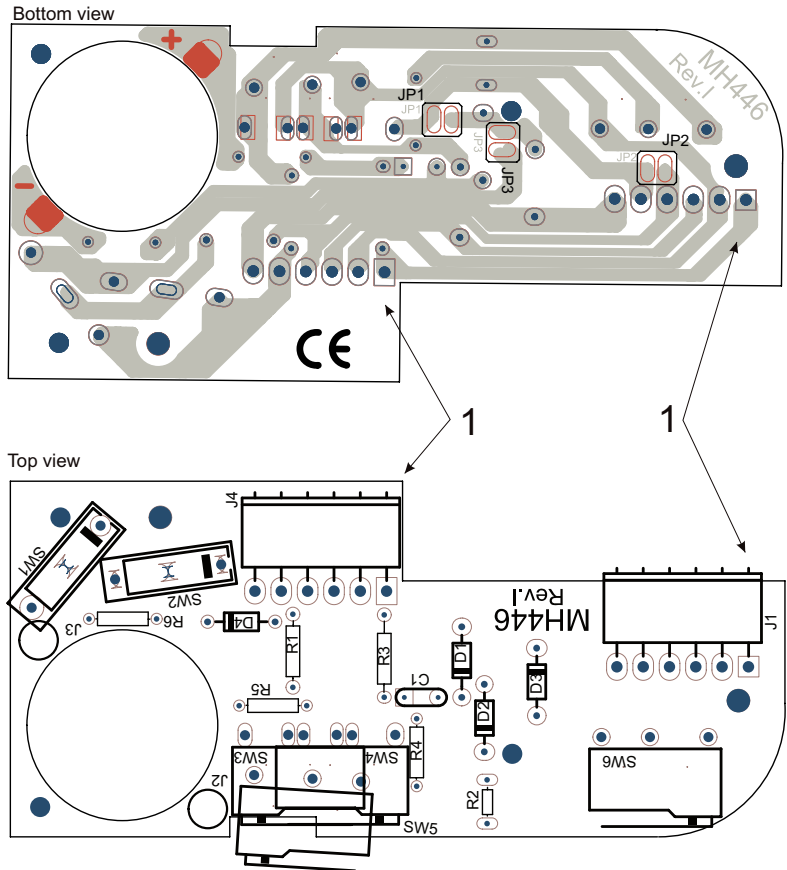
X2 SMALL SM4X



X2 SMALL SM4Y



MH446 Connections:



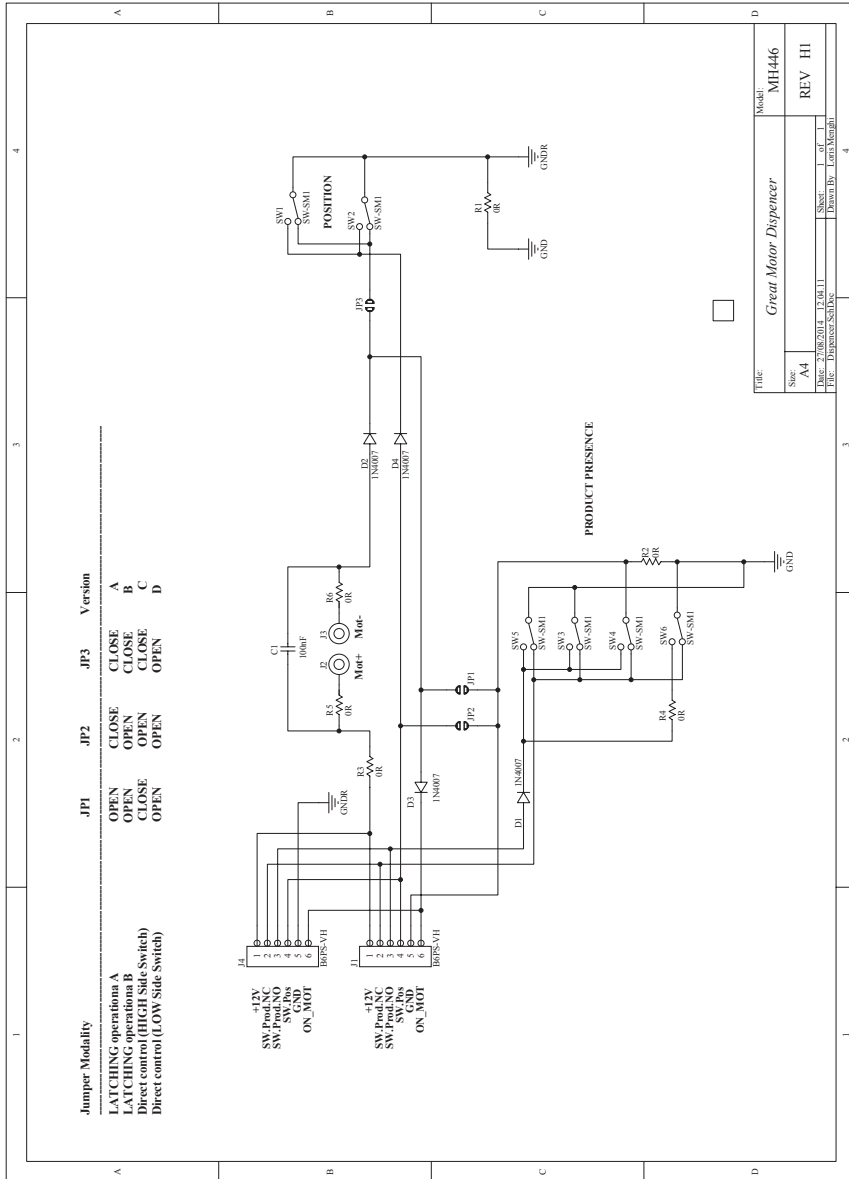
Connector of MotorDispenser step 3.96mm:

JST: cod. VHR-6N

Contact 20-16 AWG. cod.SVH-41T-P1.1

Compatible ADIMPEX: cod. J3962106

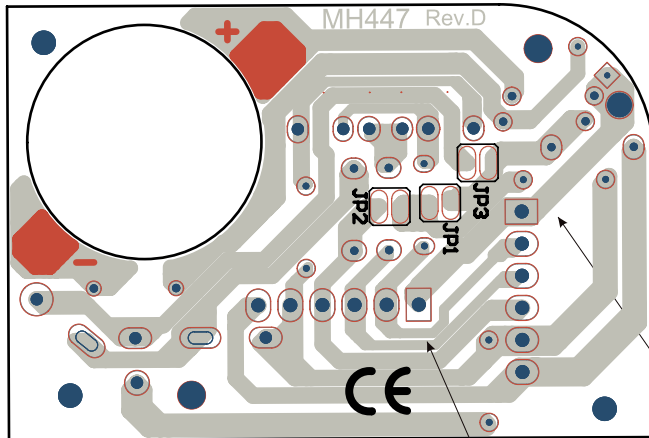
Contact 20-16 AWG. cod.J3962005



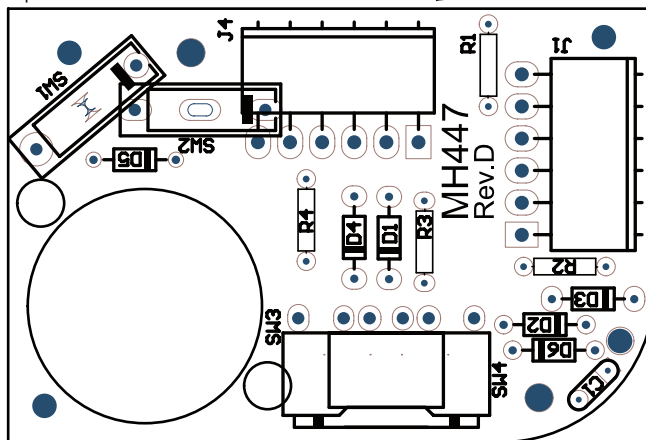
Title		Model	
Great Motor Dispenser		MH446	
Size	A4	Sheet	1 of 1
Date	23.08.2014 - 12.04.11	Drawn By	Lars Mengel
File	Dispenser Sch.Dwg		

MH447 Connections:

Bottom view



Top view



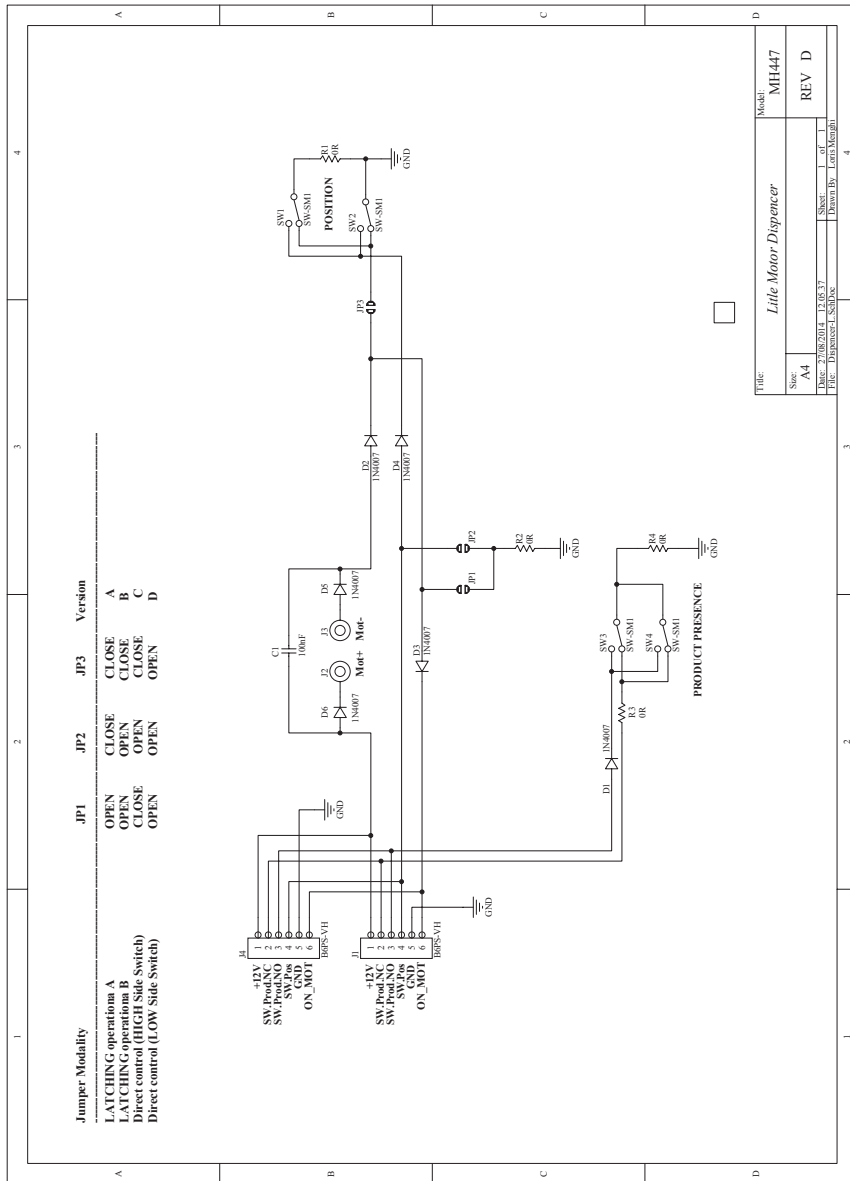
Connector of MotorDispenser step 3.96mm:

JST: cod. VHR-6N

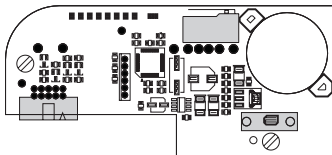
Contact 20-16 AWG. cod.SVH-41T-P1.1

Compatible ADIMPEX: cod. J3962106

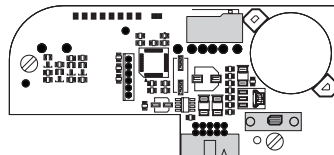
Contact 20-16 AWG. cod.J3962005



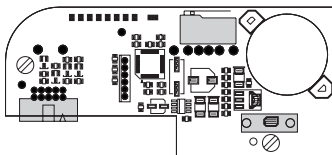
X2 CC TALK CT1X



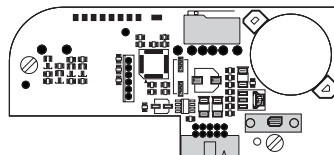
X2 CC TALK CT1Y



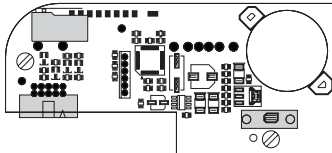
X2 CC TALK CT2X



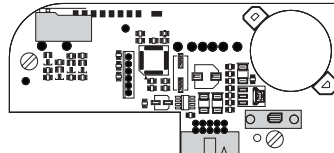
X2 CC TALK CT2Y



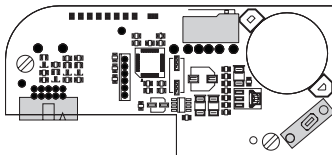
X2 CC TALK CT3X



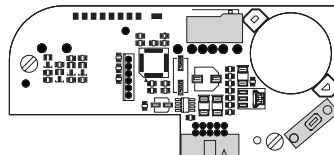
X2 CC TALK CT3Y



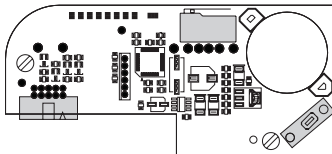
X2 CC TALK CT4X



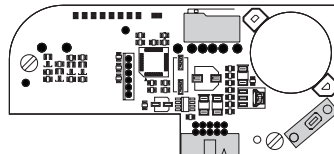
X2 CC TALK CT4Y



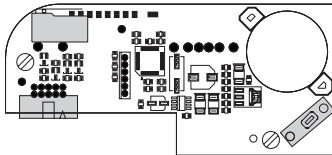
X2 CC TALK CT5X



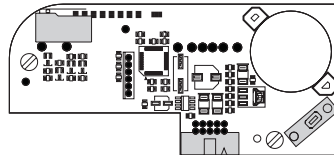
X2 CC TALK CT5Y



X2 CC TALK CT6X



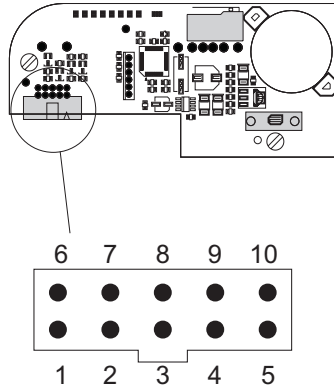
X2 CC TALK CT6Y



2.7 COMANDI SUPPORTATI CCTALK

Flat 10 Pin Connector

Pin 1	- Data ccTalk
Pin 2	- n.c.
Pin 3	- n.c.
Pin 4	- Gnd
Pin 5	- n.c.
Pin 6	- n.c.
Pin 7	- +12V
Pin 8	- Gnd
Pin 9	- n.c.
Pin 10	- +12V



Pin 1 data line
Pin 4 and Pin 8 GND
Pin 7 and Pin 10 +24

The remaining Pins are not connected.

Header 255	Factory set-up and test
Header 254	Simple poll
Header 253	Address poll
Header 252	Address clash
Header 251	Address change
Header 250	Address random
Header 247	Request variable set
Header 246	Request manufacturer id
Header 245	Request equipment category id
Header 244	Request product code
Header 242	Request serial number
Header 241	Request software revision
Header 236	Read opto states
Header 219	Enter new PIN number
Header 218	Enter PIN number
Header 217	Request payout high / low status
Header 216	Request data storage availability
Header 215	Read data block
Header 214	Write data block
Header 192	Request build code
Header 172	Emergency stop
Header 171	Request hopper coin
Header 169	Request address mode
Header 168	Request hopper dispense count
Header 167	Dispense hopper coins
Header 166	Request hopper status
Header 165	Modify variable set
Header 164	Enable hopper
Header 163	Test hopper
<p> Flag Explanation Absolute maximum current exceeded Payout timeout occurred Motor reversed during last payout to clear a jam Opto fraud attempt, path blocked during idle Opto fraud attempt, short-circuit during idle Opto blocked permanently during payout Power-up detected Payout disabled Opto fraud attempt, short-circuit during payout Single coin mode PIN number mechanism </p>	
Header 161	Pump RNG
Header 160	Request cipher key
Header 4	Request comms revision
Header 3	Clear comms status variables
Header 2	Request comms status variables
Header 1	Reset device

Header 251 address change

With this command the ccTalk address can be changed at will and in a non-volatile way. If address 0 or 1 is selected, the command is ignored; the address is 3 by default.

The ccTalk address can also be changed in hardware mode on the printed circuit called "A0-A7" (from address 0 to address 255):

jumper open = 0 (default)

jumper closed = 1

If address 0 (default - all jumpers open) or address 1 is selected via the jumpers, software addressing mode is selected.

Dispense command

The dispense command accepts quantity 1 only; therefore only one product may be dispensed for each dispense command. If an attempt is made to dispense more than one product with a single dispense command, the motor dispenser responds with a "NAK" signal.

2.8 TABLE FOR ORDERS



To request new products fill out the table below depending on the various combinations possible (see chapter 2), indicating the quantity desired in the relative box.

Requests with missing information will not be taken into consideration.

Send copy/ies by fax to number +49 (089) 4141446-75

NEW PRODUCT REQUEST FORM Send copy to fax nr +49 (089) 4141446-75

CUSTOMER INFORMATION

Company name _____

Address _____ Date of request _____

City _____

tel. _____ Stamp/Signature _____

fax _____

MODEL SERIES X	JUMPER VERSION			
	vers. A	vers. B	vers. C	vers. D
	q.ty	q.ty	q.ty	q.ty
SD1X				
SD2X				
SD3X				
SD4X				
SD5X				
SD6X				
SM1X				
SM2X				
SM3X				
SM4X				
MODEL SERIES X	CC TALK VERSION			
	q.ty	q.ty	q.ty	q.ty
	q.ty	q.ty	q.ty	q.ty
CT1X				
CT2X				
CT3X				
CT4X				
CT5X				
CT6X				

MODEL SERIES Y	JUMPER VERSION			
	vers. A	vers. B	vers. C	vers. D
	q.ty	q.ty	q.ty	q.ty
SD1Y				
SD2Y				
SD3Y				
SD4Y				
SD5Y				
SD6Y				
SM1Y				
SM2Y				
SM3Y				
SM4Y				
MODEL SERIES Y	CC TALK VERSION			
	q.ty	q.ty	q.ty	q.ty
	q.ty	q.ty	q.ty	q.ty
CT1Y				
CT2Y				
CT3Y				
CT4Y				
CT5Y				
CT6Y				

3 SPARE PARTS



To replace parts use exclusively original spare parts.



Use of non-original and/or non-regulation spare parts (if not authorized in writing exclusively by the customer service center) releases the manufacturer from any liability whatsoever.

To request spare parts photocopy the pertinent page of the spare parts table and fill out completely the table, indicating the table containing the part, its reference number on the drawing and the quantity of parts required, and your personal information.

Incomplete requests will not be taken into consideration.

SPARE PARTS REQUEST FORM Send copy to fax nr +49 (089) 4141446-75

CUSTOMER INFORMATION

Company name _____
 Address _____ Date of request _____
 City _____
 tel. _____ Stamp/Signature _____
 fax _____

TAB.	N.	Q.TY

TAB.	N.	Q.TY

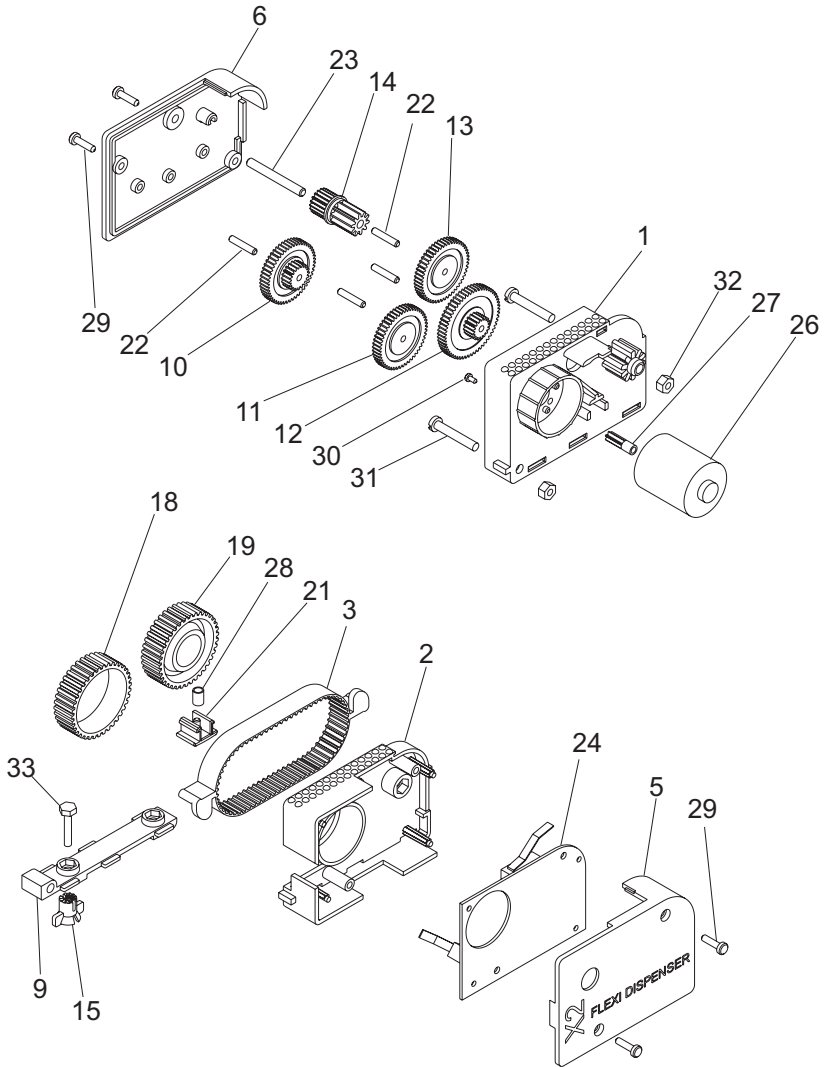


TABLE. 1 - X2 SMALL

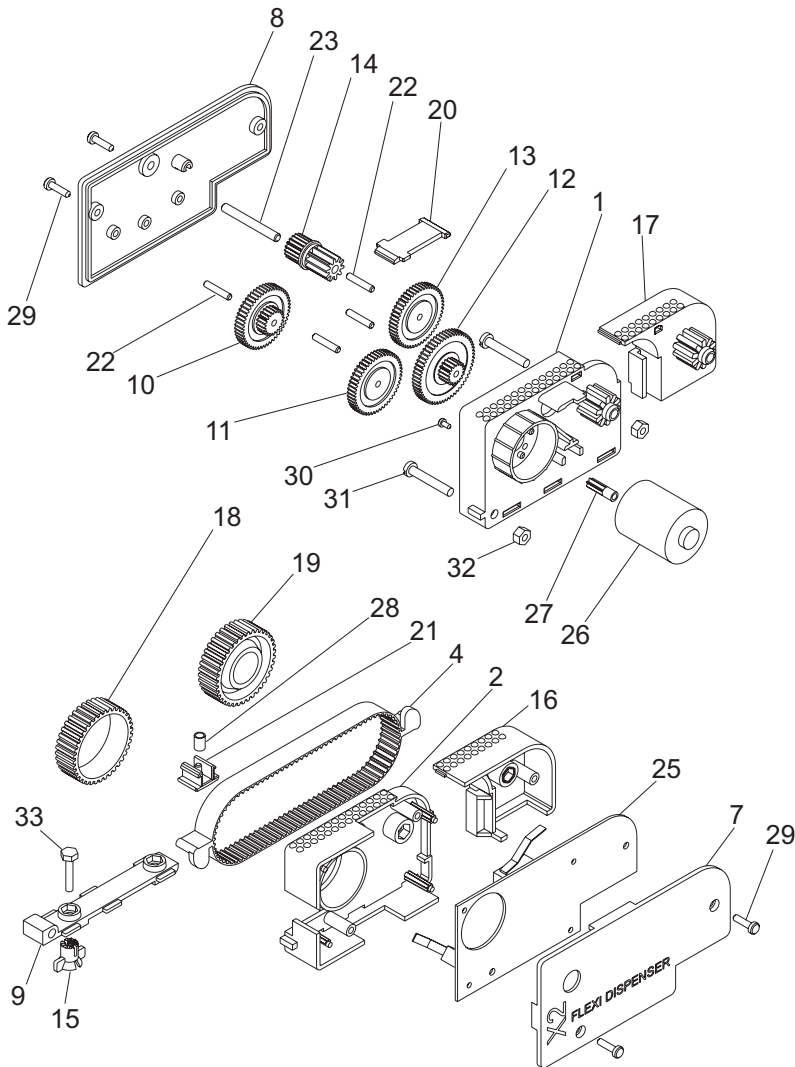


TABLE. 2 - X2 STANDARD

A.u.S. Spielgeräte GmbH
Scheydgasse 48 - A-1210 Wien
TEL.: +49 (089) 4141446-00 FAX: +49 (089) 4141446-75
info@saXXot.de
www.saXXot.de